

NEW MOTOR VEHICLE REGISTRATIONS

AUSTRALIA
PRELIMINARY

EMBARGOED UNTIL 11:30AM THURS 22 FEBRUARY 1996

JANUARY KEY FIGURES

TREND ESTIMATES

	Jan 96	monthly % change	annual % change
Total new motor vehicle registrations	51 909	0.7	-2.7
Passenger vehicles	43 527	0.6	-1.6
Other vehicles	8 382	1.1	-8.4

SEASONALLY ADJUSTED

	Jan 96	monthly % change	annual % change
Total new motor vehicle registrations	53 232	2.1	-1.8
Passenger vehicles	44 385	1.5	-2.0
Other vehicles	8 848	5.6	-0.7

ORIGINAL ESTIMATES

	Jan 96	monthly % change	annual % change
Total new motor vehicle registrations	44 441	-12.3	3.5
Passenger vehicles	37 434	-12.8	3.2
Other vehicles	7 007	-9.2	5.3

JANUARY KEY POINTS

TREND ESTIMATES

- The trend estimate for total new vehicle registrations further strengthened in January 1996, increasing 0.7 per cent on the December 1995 estimate. This represents the third consecutive month of growth in the estimates, but is still 4.9 per cent below the peak level of April 1995. The trend estimate for passenger vehicle registrations in January 1996 was 0.6 per cent higher than December 1995.

TAKE CARE!
Trend estimates are revised as new monthly data become available.

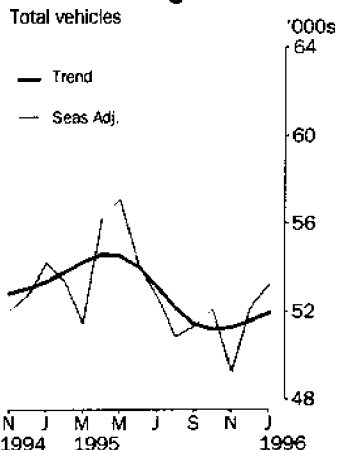
SEASONALLY ADJUSTED ESTIMATES

- Total new motor vehicle registrations for January rose 2.1 per cent in seasonally adjusted terms compared with the previous month. Passenger vehicle registrations rose 1.5 per cent over December 1995, while other vehicles were higher by 5.6 per cent.

ORIGINAL ESTIMATES

- Total new motor vehicle registrations fell by 12.3 per cent in January 1996 compared with December 1995. Passenger vehicle registrations fell by 12.8 per cent while other vehicle registrations fell by 9.2 per cent. All States and Territories recorded decreases in total registrations with the exception of Queensland where there was a marginal increase.

New vehicle registrations



INQUIRIES

- For further information about these and related statistics, contact Clare Newman on 07 3222 6180, or any ABS Office.

NEW MOTOR VEHICLE NOTES

FORTHCOMING ISSUES

ISSUE	RELEASE DATE
February 1996	28 March 1996
March 1996	24 April 1996
April 1996	23 May 1996

CHANGES IN THIS ISSUE

There are no changes in this issue.

TREND REVISIONS

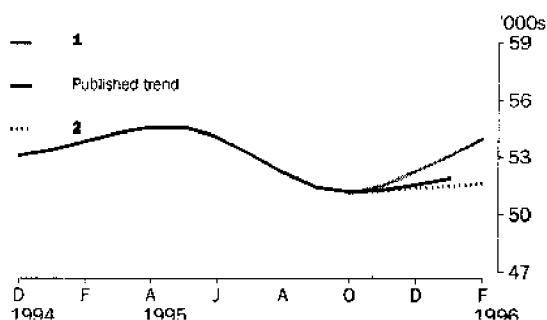
The most recent trend estimates are likely to be revised when new seasonally adjusted estimates become available.

The graph below presents the effect of two possible scenarios on the previous trend estimates:

- 1 The February seasonally adjusted estimate for total vehicle registrations is higher than the January seasonally adjusted estimate by 5.2%.
- 2 The February seasonally adjusted estimate for total vehicle registrations is lower than the January seasonally adjusted estimate by -5.2%.

The percentage change of 5.2% was chosen because the average absolute percentage change, based on the last 11 years, has been 5.2%.

TAKE CARE!
Trend estimates are revised as new monthly data become available.



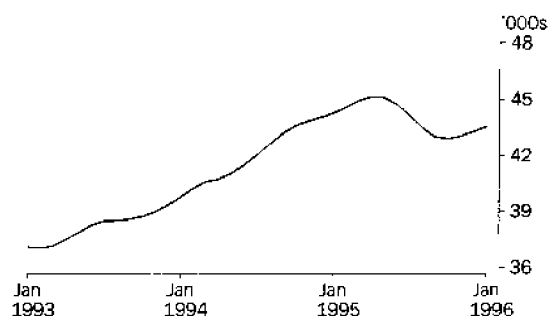
A rise of 5.2 per cent in total seasonally adjusted new motor vehicle registrations for February 1996 would produce a significant increase in the revised trend from November 1995. A similar decrease in the seasonally adjusted figure in February 1996 would result in a flattening of the revised trend.

W. McLennan
Australian Statistician

VEHICLE REGISTRATIONS BY TYPE: Trend series

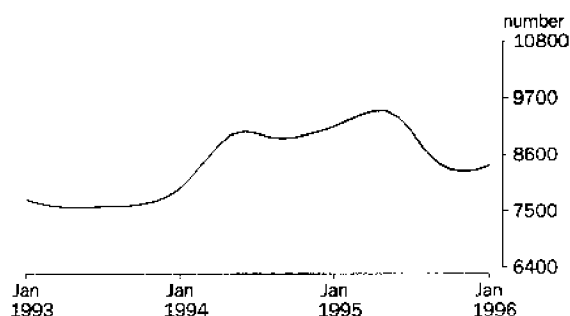
PASSENGER VEHICLES

The trend level for passenger vehicles has risen slightly in the last two months and now stands at 3.5 per cent below the peak of April 1995, and 17.5 per cent above the low recorded in December 1992.



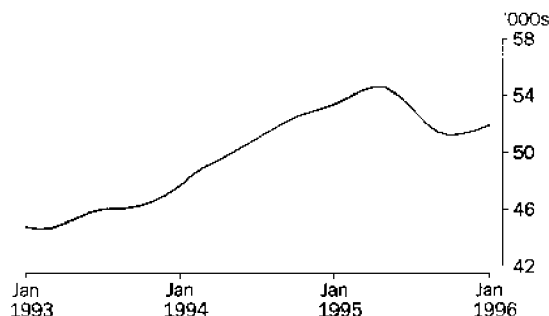
OTHER VEHICLES

The trend estimate for other vehicle registrations for January 1996 is 8.7 per cent higher than that recorded for January 1993. Despite rises in the months of December 1995 and January 1996, the level is still 11.3 per cent lower than the peak in May 1995.



TOTAL VEHICLES (EXCLUDING MOTOR CYCLES)

The trend level rose 22.0 per cent between March 1993 and April 1995. This was followed by a drop in level of 6.2 per cent between May and October 1995. Since October 1995 the trend level has increased slightly.





NEW MOTOR VEHICLES, Registrations By Type: All Series

Month	Passenger vehicles	Other vehicles	Total
ORIGINAL			
1994			
November	45 485	9 949	55 434
December	43 948	8 850	52 798
1995			
January	36 283	6 657	42 940
February	41 292	7 900	49 192
March	47 264	9 982	57 246
April	39 470	8 250	47 720
May	52 556	11 566	64 122
June	47 511	12 308	59 819
July	43 723	9 196	52 919
August	45 920	8 215	54 135
September	41 305	7 980	49 285
October	45 179	8 310	53 489
November	43 685	8 266	51 951
December	42 944	7 721	50 665
1996			
January	37 434	7 007	44 441
SEASONALLY ADJUSTED			
1994			
November	42 791	9 219	52 011
December	43 334	9 378	52 712
1995			
January	45 312	8 909	54 221
February	44 471	8 931	53 402
March	42 540	8 928	51 468
April	46 219	9 969	56 188
May	47 388	9 696	57 083
June	44 433	9 684	54 116
July	44 032	8 688	52 720
August	42 434	8 427	50 860
September	42 697	8 643	51 340
October	43 792	8 325	52 117
November	41 573	7 724	49 298
December	43 744	8 379	52 123
1996			
January	44 385	8 848	53 232
TREND ESTIMATES ¹			
1994			
November	43 804	8 996	52 800
December	43 998	9 060	53 058
1995			
January	44 226	9 147	53 373
February	44 547	9 252	53 799
March	44 896	9 360	54 255
April	45 122	9 443	54 565
May	45 097	9 451	54 548
June	44 712	9 319	54 031
July	44 101	9 042	53 143
August	43 457	8 706	52 163
September	42 983	8 438	51 421
October	42 876	8 304	51 180
November	43 012	8 269	51 281
December	43 256	8 288	51 543
1996			
January	43 527	8 382	51 909

¹ Trend estimates for July 1995 to December 1995 have been revised.



NEW MOTOR VEHICLES, Registrations By Type: Original

<i>Month</i>	<i>Passenger vehicles</i>	<i>Light commercial vehicles</i>	<i>Rigid trucks</i>	<i>Articulated trucks</i>	<i>Non-freight carrying trucks</i>	<i>Buses</i>	<i>Total (excludes motor cycles)</i>	<i>Motor cycles</i>
1994								
November	45 485	7 974	1 058	449	102	366	55 434	1 981
December	43 948	6 979	1 017	409	60	385	52 798	1 892
1995								
January	36 283	5 434	592	270	40	321	42 940	1 854
February	41 292	6 365	830	293	28	384	49 192	1 686
March	47 264	8 196	964	360	78	384	57 246	1 848
April	39 470	6 772	723	317	83	355	47 720	1 458
May	52 556	9 477	1 130	429	83	447	64 122	1 960
June	47 511	9 725	1 229	718	98	538	59 819	1 590
July	43 723	7 547	965	229	98	357	52 919	1 686
August	45 920	6 611	870	227	113	394	54 135	1 751
September	41 305	6 434	867	210	124	345	49 285	1 732
October	45 179	6 680	907	273	62	388	53 489	1 775
November	43 685	6 610	871	303	91	391	51 951	2 251
December	42 944	6 250	776	252	81	362	50 665	1 991
1996								
January	37 434	5 856	590	159	75	327	44 441	2 034



NEW MOTOR VEHICLES, Registrations By State: All Series

Month	New South Wales	Victoria	Queensland	South Australia	Western Australia	Tasmania	Northern Territory	Australian Capital Territory	Australia
ORIGINAL									
1994									
November	20 419	12 554	9 910	3 733	5 925	1 280	607	1 006	55 434
December	17 623	12 527	10 918	3 490	5 379	1 363	463	1 035	52 798
1995									
January	15 906	9 628	7 354	2 876	5 016	879	478	803	42 940
February	17 808	11 740	8 868	3 365	5 008	1 003	530	870	49 192
March	20 896	14 066	9 602	4 025	5 593	1 097	774	1 193	57 246
April	17 485	10 211	10 755	2 786	4 359	819	537	768	47 720
May	22 787	15 465	11 568	4 342	6 355	1 356	976	1 273	64 122
June	20 519	15 586	9 555	4 184	6 558	1 214	956	1 247	59 819
July	19 063	10 489	13 234	2 992	4 676	1 029	534	902	52 919
August	18 859	13 678	9 124	3 963	5 416	1 269	680	1 146	54 135
September	16 345	12 123	9 450	3 452	4 986	1 260	604	1 065	49 285
October	18 775	12 317	10 747	3 647	5 132	1 280	656	935	53 489
November	18 230	13 017	8 456	3 751	5 804	853	688	1 152	51 951
December	16 775	12 067	9 544	3 552	5 410	1 734	539	1 044	50 665
1996									
January	15 621	10 165	9 561	2 823	4 019	871	504	877	44 441
SEASONALLY ADJUSTED									
1994									
November	18 363	12 260	9 747	3 415	5 512	1 253	571	891	52 011
December	18 628	12 386	10 527	3 510	5 111	907	555	1 087	52 712
1995									
January	19 900	12 602	9 263	3 711	5 797	1 200	678	1 068	54 221
February	19 369	12 430	9 917	3 609	5 267	1 196	642	972	53 402
March	18 375	12 720	8 884	3 602	5 049	1 099	673	1 066	51 468
April	21 028	12 088	11 772	3 430	5 211	1 105	586	967	56 188
May	19 280	13 705	10 456	4 145	6 145	1 411	800	1 140	57 083
June	18 512	13 678	9 426	3 702	5 713	1 194	790	1 101	54 116
July	19 190	10 875	12 000	3 088	5 041	1 081	499	945	52 720
August	17 670	12 523	9 075	3 624	5 162	1 173	639	994	50 860
September	17 512	12 667	9 752	3 419	5 187	1 131	652	1 021	51 340
October	18 904	11 790	10 069	3 448	5 130	1 199	636	939	52 117
November	16 395	12 940	8 575	3 441	5 340	847	663	1 098	49 298
December	18 469	12 184	9 378	3 763	5 407	1 177	650	1 095	52 123
1996									
January	18 472	12 685	11 223	3 500	4 457	1 148	668	1 078	53 232
TREND ESTIMATES¹									
1994									
November	19 078	12 332	9 833	3 453	5 394	1 150	587	973	52 800
December	19 165	12 420	9 848	3 510	5 384	1 128	605	997	53 058
1995									
January	19 268	12 524	9 861	3 577	5 371	1 126	625	1 021	53 373
February	19 398	12 632	9 935	3 622	5 387	1 143	644	1 038	53 799
March	19 522	12 717	10 078	3 638	5 428	1 169	655	1 048	54 255
April	19 508	12 778	10 273	3 628	5 475	1 191	658	1 052	54 565
May	19 346	12 763	10 447	3 594	5 491	1 209	652	1 047	54 548
June	19 013	12 654	10 486	3 543	5 454	1 205	641	1 034	54 031
July	18 602	12 501	10 320	3 493	5 392	1 181	633	1 020	53 143
August	18 217	12 362	10 016	3 463	5 317	1 150	630	1 008	52 163
September	17 941	12 291	9 744	3 457	5 232	1 116	632	1 007	51 421
October	17 849	12 307	9 625	3 478	5 170	1 094	639	1 019	51 180
November	17 853	12 386	9 631	3 515	5 120	1 086	649	1 040	51 281
December	17 911	12 473	9 736	3 554	5 059	1 088	658	1 063	51 543
1996									
January	17 985	12 639	9 823	3 602	5 002	1 096	674	1 089	51 909

¹ Trend estimates for July 1995 to December 1995 have been revised.

NEW PASSENGER VEHICLES, Selected Make/Models: **Original**— January 1996

Make/Model	New South Wales	Victoria	Queensland	South Australia	Western Australia	Tasmania	Northern Territory	Australian Capital Territory	Australia
Ford									
Falcon/Fairmont	1 553	1 175	1 001	250	267	59	28	100	4 433
Festiva	561	372	291	184	124	42	8	25	1 607
Mondeo	125	125	56	36	40	4	5	18	409
Other	213	180	127	47	74	11	4	10	666
Total	2 452	1 852	1 475	517	505	116	45	153	7 115
Holden									
Commodore/Calais	1 711	1 191	1 148	439	372	75	37	96	5 069
Barina	355	190	193	73	79	23	3	35	951
Statesman/Caprice	114	99	88	30	42	2	3	6	384
Other	226	117	79	28	63	15	3	16	547
Total	2 406	1 597	1 508	570	556	115	46	153	6 951
Hyundai									
Excel	1 183	568	660	123	334	39	27	49	2 983
Lantra	147	85	58	13	50	8	10	11	382
Sonata	73	55	33	5	55	4	3	1	229
Other	8	10	2	..	7	27
Total	1 411	718	753	141	446	51	40	61	3 621
Mazda									
121	311	137	154	61	55	11	8	30	767
323	229	199	130	42	54	24	3	17	698
626	80	61	43	13	15	3	3	3	221
Other	31	46	21	9	9	1	..	2	119
Total	651	443	348	125	133	39	14	52	1 805
Mitsubishi									
Magna	435	376	326	199	144	47	13	70	1 610
Lancer	213	252	208	44	100	14	9	9	849
Pajero	159	56	92	13	36	10	8	9	383
Other	74	49	40	15	21	1	1	7	208
Total	881	733	666	271	301	72	31	95	3 050
Nissan									
Pulsar	146	100	101	13	40	6	4	8	418
Patrol	85	53	85	16	50	1	9	5	304
Micra	98	58	62	18	12	3	1	15	267
Other	132	150	110	22	32	8	3	8	465
Total	461	361	358	69	134	18	17	36	1 454
Toyota									
Camry	623	415	420	73	149	46	32	42	1 800
Corolla	759	377	272	90	118	35	24	55	1 730
Landcruiser	194	103	206	58	127	6	30	7	731
Other	669	351	375	75	141	27	19	35	1 692
Total	2 245	1 246	1 273	296	535	114	105	139	5 953

EXPLANATORY NOTES

INTRODUCTION

- 1 This publication presents monthly data for registrations of new motor vehicles.
- 2 The statistics in this publication are based on procedures using the Vehicle Identification Number (VIN), adopted by the State and Territory motor vehicle registration authorities. The VIN system allows more accurate classification of vehicles. In the case of some States, data processed using the VIN are not strictly comparable with data processed prior to December 1990.

SCOPE AND COVERAGE

3 Motor vehicle registration statistics are obtained from the State and Territory motor vehicle registration authorities. The statistics reflect the information recorded in registration documents. With the exception of Queensland, the statistics shown do not depart significantly from actual registrations during the period.

In the case of Queensland, a number of registrations processed in a month actually relate to vehicles registered prior to that month. Because of the lags from purchase to registration, and processing lags, the published statistics for the period can vary from actual sales of new vehicles for the same period.

- 4 The scope of the statistics:
 - includes:
 - passenger vehicles
 - light commercial vehicles
 - trucks
 - buses
 - motorcycles (note: not included in Totals)
 - vehicles with diplomatic and consular plates
 - State and Commonwealth owned vehicles
 - excludes:
 - vehicles belonging to the defence forces
 - recreation vehicles such as trail bikes and sand dune buggies (in those States where registration is required).

SEASONAL ADJUSTMENT

- 5 Seasonal adjustment is a means of removing the estimated effects of normal seasonal variation from the series so that the effects of other influences can be more clearly recognised.
- 6 Seasonal adjustment does not remove from the series the effect of irregular or non-seasonal influences (e.g. the introduction of new models, processing delays, industrial disputes).
- 7 Irregular influences that are highly volatile can make it difficult to interpret the series even after adjustment for seasonal variation.
- 8 Seasonally adjusted series are calculated for the 'Passenger vehicles', 'Other vehicles' and 'Total vehicles' series for each State and Territory and are aggregated to obtain the total for Australia.
- 9 Seasonal adjustment factors are analysed and revised as necessary annually.



TREND ESTIMATES

10 The smoothing of seasonally adjusted series to create trend estimates reduces the impact of the irregular component of the seasonally adjusted series. The trend estimates are derived by applying a 13-term Henderson-weighted moving average to the respective seasonally adjusted series. These trend series are used to analyse the underlying behaviour of the series over time.

11 While this smoothing technique enables trend estimates to be produced for the latest month, it does result in revisions to the trend estimates for the most recent months as data for subsequent months become available. Generally subsequent revisions become smaller and after three months, usually have a negligible impact on the series. Changes in the original data and re-estimation of seasonal factors may also lead to revisions to the trend. For further information, see *A Guide to Interpreting Time Series — Monitoring Trends: an Overview* (1348.0) or contact the Assistant Director, Time Series Analysis on (06) 252 6345.

RELATED PUBLICATIONS

12 For a more detailed break-up of the monthly figures presented here, inquiries should be made to Clare Newman on 07 3222 6180 or to any ABS office. Data on total vehicle registrations, both new and re-registrations, is available in *Motor Vehicle Census, Australia, 30 June 1993* (9309.0).

SYMBOLS AND OTHER USAGES

n.p. not available for publication, but included in totals.



GLOSSARY

.....

- Articulated trucks** Vehicles constructed primarily for load carrying consisting of a prime mover having no significant load carrying area but with a turn table device which can be linked to a trailer. With or without a trailer the gross combination mass will be 3.5 tonnes or more.
- Buses** Includes all passenger vehicles having more than nine seats, including the driver.
- Light commercial vehicles** Describes goods carrying vehicles less than 3.5 tonnes gross vehicle mass. Included are utilities, panel vans, cab-chassis and forward control vehicles (whether four-wheel drive or not).
- Motor cycles** Includes 2 and 3 wheeled mopeds, scooters, motor tricycles and motor cycles with side cars.
- Non-freight carrying trucks** Includes specialist vehicles such as ambulances, mobile cranes or vehicles fitted with special purpose equipment and having no goods carrying capacity.
- Passenger vehicles** Includes cars, station wagons, four-wheel drive passenger vehicles and forward control passenger vehicles with up to nine seats (including the driver).
- Registrations** This includes all registrations processed by the motor vehicle registration authorities in the States and Territories during the relevant period.
- Rigid trucks** Vehicles constructed primarily for load carrying with a gross vehicle mass of 3.5 tonnes or more.
- VIN** The Vehicle Identification Number (VIN) uniquely identifies each vehicle. Embedded in the number are details of make and model together with other relevant information about the vehicle. The VIN is collected by the motor vehicle registration authorities at the time of registration.





FOR MORE INFORMATION . . .

The ABS publishes a wide range of information on Australia's economic and social conditions. A catalogue of publications and products is available from any of our offices (see below).

INFORMATION CONSULTANCY SERVICES

Information tailored to special needs of clients can be obtained from the Information Consultancy Service available at ABS Offices (see below).

ABS PRODUCTS

A large number of ABS products is available from the ABS Bookshops (see below). The ABS also provides a subscription service – you can telephone the ABS Subscription Service Australia wide toll free on 1800 0206 08.

ELECTRONIC SERVICES

A large range of data is available via on-line services, diskette, magnetic tape, tape cartridge and CD ROM. For more details about our electronic data services, contact any ABS office (see below) or e-mail us at:

X.400 (C:Australia,PUB:Telememo,O:ABS, FN:STAT,SN:INFO)
Internet Stat.info@abs.telememo.au
Keylink STAT.INFO/ABS

You can visit us on the Internet at: <http://www.statistics.gov.au>

GENERAL SALES AND INQUIRIES

- Sydney 02 268 4611
 - Melbourne 03 9615 7755
 - Brisbane 07 3222 6351
 - Perth 09 360 5140
 - Adelaide 08 237 7100
 - Hobart 002 20 5800
 - Darwin 089 43 2111
 - Canberra 06 252 6627
- Information Services, ABS
PO Box 10, Belconnen ACT 2616



2930100001967

ISSN 1323 4528

RRP \$13.00